



**Successful Use of
Enhanced Web lectures
in Online Education: *An
Enthusiastic User Case.***

elevate



MediaMission

elevate



MediaMission



(WEB)LECTURES ARE BORING



Source: <http://rccblog.com/wp-content/uploads/2013/11/susan8.jpg>



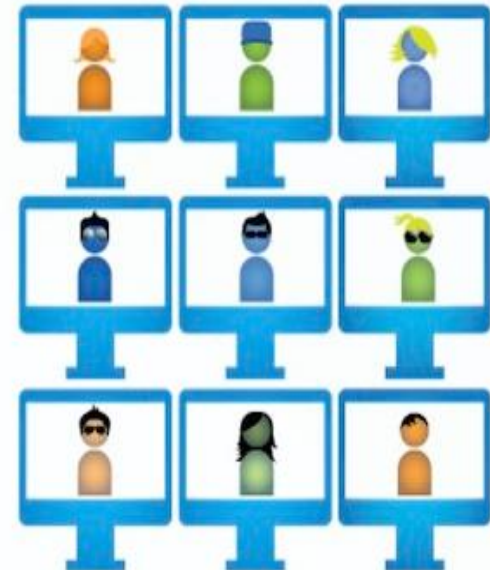
INDIVIDUALIZED LEARNING

▶ THE CHANGING LANDSCAPE

From the one-size-fits-all model
and unprepared students...



...to technology-enabled solutions
customized for each student.



✓ HOW CAN WE KEEP THE STUDENTS ATTENTION? (AND ACHIEVE HIGHER LEARNING OUTCOMES)

Didactics



- ✓ More active
- ✓ Direct feedback

Technology



- ✓ Professional recordings
- ✓ Interactive web lectures

Content

- ✓ Shorter lectures
- ✓ Suitable for web lecture?

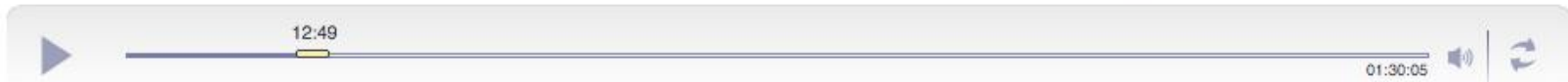
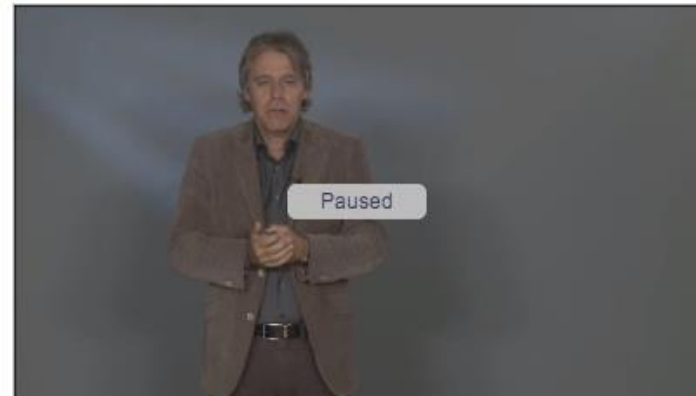


ENHANCED MEDIASITE WEB LECTURES



Challenges in clinical practice

- what's wrong with this patient?
diagnostic knowledge
- why is this patient ill?
etiologic knowledge
- what will happen if I don't intervene?
prognostic knowledge
- what will be the effects of an intervention?
therapeutic (prognostic!) knowledge



Lecture

Hide questions

First question ▶▶

Introduction to Clinical Epidemiology

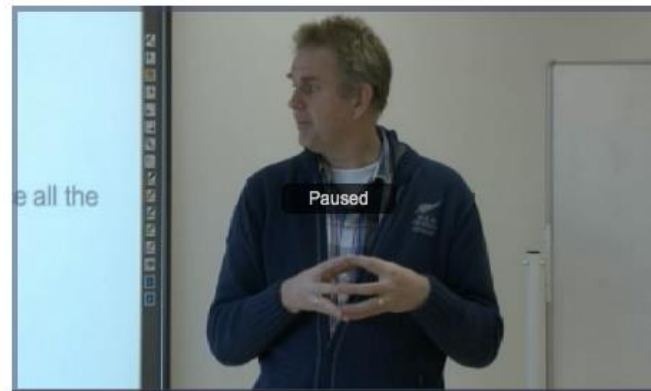


ENHANCED WEB LECTURE: MC QUESTIONS

Basics of economics: Resources

- ✓ Resources
 - Natural/biological
 - Labour
 - Manufactured
- ✓ Not enough resources to produce all the goods to fulfill our needs
 - At personal level
 - At company level
 - At (inter)national level

✓



Resources

The three resource groups are: Natural/Biological, Labour, Manufactured.
Which row of examples has an example from all 3 resource groups?

- Grass, farmhand, the bank
- Grass, cows, milk.
- Oil, milking machine, farmhand

MC questions
with direct
feedback



ENHANCED WEB LECTURE: END SCREEN

Clinical epidemiology

- diagnostic research 
- etiologic research 
- prognostic research
- intervention research 





Question:	Your answer:
Which of the following statements is NOT true about prediction research?	<input type="button" value="Incorrect"/>
True or False: Causal research aims to describe the occurrence of an outcome.	<input type="button" value="Incorrect"/>
Smoking is considered a potential confounder when studying the association between alcohol and lung cancer because:	<input type="button" value="Incorrect"/>



ENHANCED WEB LECTURE: END SCREEN

Results	
Importance health economics Why is health economics important?	▶ Incorrect
Effects of disease Which example of effects of disease is true?	▶ Incorrect
Resources The three resource groups are: Natural/Biological, Labour, Manufactured. Which row of examples has an example from all 3 resource groups?	▶ Incorrect
Scarcity Which answer is best linked to 'Economic Scarcity'?	▶ Incorrect
Scope of Economics (1) Looking at a farm is microeconomics.	▶ Incorrect
Scope of Economics (2) Looking at all dairy farms in the Netherlands is microeconomics.	▶ Incorrect
Animal Health Economics What is animal health economics?	▶ Incorrect

(In)correct with link to part of lecture



ADDING QUESTIONS & ANSWERS

[Home](#) [About](#) [Packages](#)

Package name: TestNutritionalEpidemiologyKTucker **Description:** Test lecture **PublicationDate:** 11/17/2014

Interaction Items

	Title	#	Display Result	Pause Presentation	Type	Phase	Screen
Select Edit Delete	Question 1	1	<input checked="" type="checkbox"/>	<input checked="" type="checkbox"/>	Normal		Default

[Add Interaction Item](#)

Interaction Item Parts

	Text	#	Can Have Multiple Answers	Must Be Answered	CorrectAnswerText
Select Edit Delete	What is the name of the lecturer	1	<input type="checkbox"/>	<input checked="" type="checkbox"/>	

[Add Interaction Item Part](#)

Interaction Item part answers

	Text	#	Motivation Text	Is Correct Answer
Edit Delete	Tatherine Kucker	1	Correct	<input checked="" type="checkbox"/>
Edit Delete	Katherine Tucker	1		<input type="checkbox"/>

[Add Answer](#)

[Back to PackageDetails](#)





EVALUATION RESULTS PILOTS

View All Responses. All participants. View Default order Responses: 12

4.3 Evaluation Weblectures Feature

1

1. Have you watched the previous four weblectures?

Response	Average	Total
Yes		100%2
Total		100%2

- ✓ 20 participants / 18 evaluations
- ✓ **All participants** viewed all the web lectures
- ✓ (Almost) **No participants skipped** parts of the weblectures



EVALUATION RESULTS PILOTS



- ✓ Few technical difficulties
- ✓ All participants **appreciated** the questions
- ✓ Participants indicated that the questions were **relevant to the lecture**
- ✓ Almost all participants **answered** the questions **correctly**
- ✓ Participants **used and appreciated the summary** at the end of the lecture



SUGGESTIONS FOR IMPROVEMENT

- ✓ (Professional) **studio recordings**
- ✓ **Download** option
- ✓ **Bigger** (font in) slides
- ✓ **Zoom** in/out option
- ✓ Add a (live) **discussion** tool



Source:
<http://www.theguardian.com/money/2013/ma>



CHALLENGES

Creating a **professional studio recording environment**

Preparing the speaker for a web lecture recording

Editing the presentation slides to fit the web lecture environment

Developing **relevant questions** for the web lecture

Other challenges that are relevant in your personal context



Q&A



www.elevatehealth.eu



Try us now at:

<https://elearning.elevatehealth.eu>

Username: tutorial

Password: Elevate@2014

Connect with Elevate



@ElevateH



[linkedin/elevate health.eu](https://www.linkedin.com/company/elevate-health)



[Facebook.com/ElevateHealth.eu](https://www.facebook.com/ElevateHealth.eu)

Davey.vander.Heijden@elevatehealth.eu